

# ENTERPRISE INSIGHT



## Product Engineering Configuration

Product Engineering Configuration is the centerpiece of Enterprise inSight, generating information relevant to all other modules. Enterprise inSight supports multiple engineering tools including ShopWare CAD, IMOS CAD, ShopWare Product Planner, and the Bill of Materials configurator. Unlike most engineering software, the engineering configurator can be invoked directly from sales, through order entry functions, and can configure standard, semi-custom, and custom products dynamically.

### FEATURES

#### Mass Customization

- Product configuration using features and options
- Visualization of engineered product during order entry
- High-volume processing of customized products
- Standard costing for custom products

#### CNC Machine Integration

- Dynamic CNC program creation and distribution
- Mixed manufacturing methods such as panel saw optimization and Nesting
- Human-machine interfaces
- Multiple geometry input formats such as DXF, NCL, and FXM

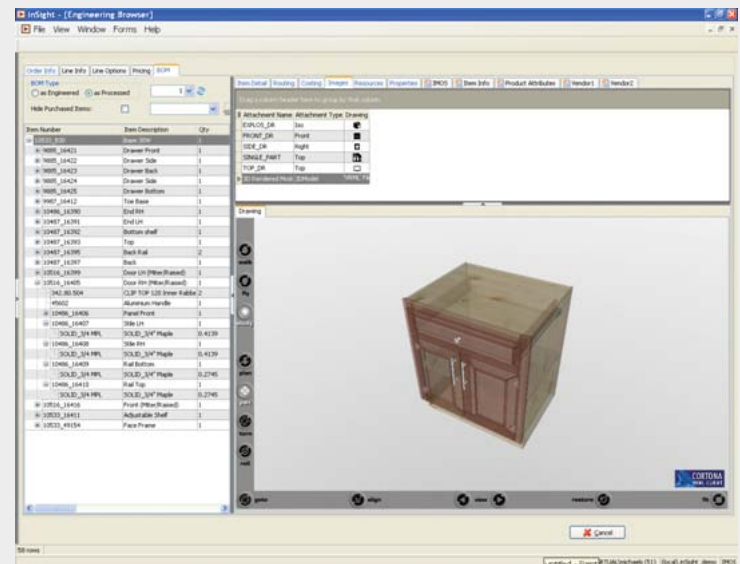
#### Integrated workflow for specials

- Workflow management tools
- One-time engineered products
- VRML and drawing output for customer sign-off
- Integration of specials into standard business process

#### Auto creation of BOM, routings, and costing data

- Indented multi-level BOM creation
- Rule-based make or buy decisions
- Configurable routings and operations
- Standard labor and material cost calculation with fixed and variable overheads

### ENGINEERING

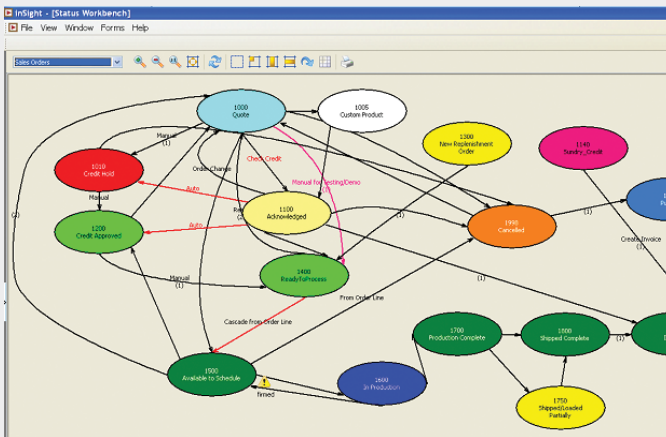


The Engineering Browser is a consolidated viewing area for all product information related to a specific order instance. The user can analyze and validate the generated bills of material, and can view and rotate a three-dimensional image of the product.

### BENEFITS

- Integration of multiple engineering platforms with inSight to support the unique needs of the kitchen, office, furniture, and hospitality sectors
- Integration of engineering with the post-processor to create dynamic CNC programs
- Automated creation of bills of material, drawings, CNC programs, and purchasing requirements
- Support for high-volume mass customization, from order entry to engineering

## STATUS WORKFLOW



The integrated workflow module uses statuses to depict each stage of the custom engineering process. The workflow automatically directs tasks or emails to inform user(s) about new specials.

## COSTING

Item	Cost
Net Price	1250.44
Labor	61.87
Material	154.49
Direct Cost	216.36
Gross Margin	1034.08
Gross Margin %	82.7
Fixed OH 1	0
Fixed OH 2	0
Fixed OH 3	0
Variable OH	25.01
Total Cost	241.37
Margin	1009.07
Margin %	80.7

Standard costs can be calculated using labor and materials, including variable or fixed overheads. The calculated result can be viewed in the Engineering Browser and compared with the cost of goods sold and net selling prices.

## FEATURES AND OPTIONS



Features and options are the key elements of the product configurator and define all possible product options. Features are mapped to engineering variables and streamed into the engineering solution to create an engineered product image.

## SYSTEM RECOMMENDATIONS ENTERPRISE INSIGHT V4.5

### DATABASE SERVER

Microsoft SQL Server 2008  
Windows 2003/2008 Server

### CLIENT WORKSTATION (MINIMUM REQUIREMENTS)

Windows XP Pro or Windows Vista  
Intel Pentium 4 Processor  
1 GB RAM  
36 GB free disk space  
Windows XP Pro Compatible Video Card  
100 MB/sec Network connection

## WORLD HEADQUARTERS + ENTERPRISE SALES & SERVICES

20-20 Technologies Inc.  
400 Armand-Frappier Blvd, Suite 2020  
Laval, Quebec H7V 4B4 Canada  
Phone: 514.332.4110  
Fax: 514.334.6043  
Sales Toll Free: 1.866.698.2020  
Quebec Toll Free: 1.888.504.2020

20-20 Technologies Inc.  
Commercial Corp.  
1255 Crescent Green Drive, Suite 410  
Cary, NC 27518  
Phone: 919.319.0888  
Fax: 919.319.0884  
Sales Toll Free: 1.800.225.7804

E-mail: [enter.sales@2020.net](mailto:enter.sales@2020.net)  
[www.2020Technologies.com](http://www.2020Technologies.com)

© 2010 by 20-20 Technologies Inc. All rights reserved. The names 20-20 Technologies, 20-20, 20-20 Design, 2020.net, 20-20 Virtual Systems, 20-20 Virtual Showroom, 20-20 Virtual Planner are registered, pending or common law trademark of 20-20 Technologies Inc. and/or any of its subsidiaries. All reference to other brands and products appearing herein are trademarks of their respective holder(s). 20-20 Technologies Inc. reserves the right to alter specifications and other product information without prior notice. The software and information contained herein are subject to the terms and conditions of the License Agreement included with the media.