

ENTERPRISE INSIGHT



↘ Scheduling and Shop Floor Execution

Scheduling and Shop Floor Execution works closely with capacity planning to create a time-phased picture of the plant loading across all work centers. Work orders are initiated and tracked, regulating workflow throughout the factory. Repairs, replacements, and back-orders are managed through processes specifically developed for the furniture industry.

FEATURES

Capacity planning

- Customizable charts
- Capacity planning by hour, pieces, dollars, and SFT
- Rough and detail capacity planning
- Capacity simulations

Production and shipment scheduling

- Shipment scheduling with quantity splitting
- Flexible and attribute-based production
- Automatic back scheduling by routing operations
- Nesting and panel saw optimization integration

Shop floor tracking and workflow

- Scanning and status tracking for parts and products
- Rejecting for part repair and replacement
- Industry solutions for:
 - Short shipping
 - Shipping without products
 - Scanning to a pallet or cart

Shop floor reporting

- Assembly documents
- Parts labels
- Machining documents
- Work/departmental lists

PRODUCTION SCHEDULE

Production Order	Order Line #	Product Line	Product	Required	Routing Number	Order Date	Customer Request	Door Style	Spine	Finish	Glue	Hardware	Shipment Description	Data Shipment	Data Shipment Loaded on Container
PLS1	SS	2300	2 KP	819L	1	10/10/2009	6/9/2009	CT	JPL	NAAPL	NO	XP	Myrtle Beach-Condo	10/12/2009	10/11/2009
PLS1	SS	2300	2 KP	819L	1	10/10/2009	6/9/2009	CT	JPL	NAAPL	NO	XP	Myrtle Beach-Condo	10/12/2009	10/11/2009
PLS1	SS	2300	4 KP	819L	1	10/10/2009	6/9/2009	CT	JPL	NAAPL	NO	XP	Myrtle Beach-Condo	10/12/2009	10/11/2009
PLS1	SS	2300	5 KP	806	1	10/10/2009	6/9/2009	CT	JPL	NAAPL	NO	XP	Myrtle Beach-Condo	10/12/2009	10/11/2009
PLS1	SS	2300	6 KP	801B	1	10/10/2009	6/9/2009	CT	JPL	NAAPL	NO	XP	Myrtle Beach-Condo	10/12/2009	10/11/2009
PLS1	SS	2300	7 KP	801C	1	10/10/2009	6/9/2009	CT	JPL	NAAPL	NO	XP	Myrtle Beach-Condo	10/12/2009	10/11/2009
PLS1	SS	2300	8 KP	W2096	1	10/10/2009	6/9/2009	CT	JPL	NAAPL	NO	XP	Myrtle Beach-Condo	10/12/2009	10/11/2009
PLS1	SS	2300	9 KP	W2426	1	10/10/2009	6/9/2009	CT	JPL	NAAPL	NO	XP	Myrtle Beach-Condo	10/12/2009	10/11/2009
PLS1	SS	2300	10 KP	W2096	1	10/10/2009	6/9/2009	CT	JPL	NAAPL	NO	XP	Myrtle Beach-Condo	10/12/2009	10/11/2009
PLS1	SS	2300	12 KP	F1809	1	10/10/2009	6/9/2009	CH	JPL	NAAPL	NO	XP	Myrtle Beach-Condo	10/12/2009	10/11/2009
PLS1	SS	2300	13 KP	F1806	1	10/10/2009	6/9/2009	CH	JPL	NAAPL	NO	XP	Myrtle Beach-Condo	10/12/2009	10/11/2009
PLS1	SS	2300	14 KP	W2942	1	10/10/2009	6/9/2009	CH	JPL	NAAPL	NO	XP	Myrtle Beach-Condo	10/12/2009	10/11/2009
PLS1	SS	2300	17 KP	W2798	1	10/10/2009	6/9/2009	PA	JPL	NAAPL	NO	XP	Myrtle Beach-Condo	10/12/2009	10/11/2009
PLS1	SS	2300	18 KP	W3006	1	10/10/2009	6/9/2009	PA	JPL	NAAPL	NO	XP	Myrtle Beach-Condo	10/12/2009	10/11/2009

By dragging and dropping the data into the production order, the production scheduling mechanism selects and filters relevant data and determines the production buckets.

BENEFITS

CAPACITY PLANNING

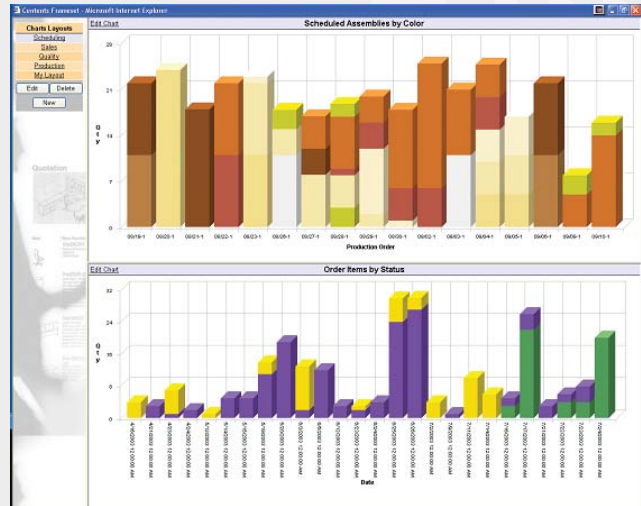
- Provides real-time feedback from the factory
- Facilitates lean manufacturing
- Integrates visualization aids for the factory
- Enables on-demand printing, scanning and email notifications

SHOP FLOOR

Work Order	Qty	Due Date	Status	Item Type	Model No.	Mfr Component Status
47167	1	8/27/2004	Scheduled Work Order	Wall Unit	W902V	Outgoing Complete
47168	1	8/27/2004	Scheduled Work Order	Wall Unit	W902V	Outgoing Complete
47169	1	8/27/2004	Scheduled Work Order	Wall Unit	W902V	Request Replacement
47165	1	8/27/2004	Outgoing Complete	Wall Unit	W902V	Available to Kit
47161	1	8/27/2004	Scheduled Work Order	Wall Unit	W902V	Available to Kit
47162	1	8/27/2004	Scheduled Work Order	Wall Unit	W902V	Outgoing Complete
47163	1	8/27/2004	Scheduled Work Order	Wall Unit	W902V	Request Replacement

Shop floor work list showing part and status information.

CHARTS



Capacity charts showing real-time factory data.

MACHINE TRAVELLER

Detailed parts drawing information displayed directly on the factory floor.

SYSTEM RECOMMENDATIONS ENTERPRISE INSIGHT V4.5

DATABASE SERVER

Microsoft SQL Server 2008
Windows 2003/2008 Server

CLIENT WORKSTATION (MINIMUM REQUIREMENTS)

Windows XP Pro or Windows Vista
Intel Pentium 4 Processor
1 GB RAM
36 GB disk space
Windows XP Pro Compatible Video Card
100 MB/sec Network connection

WORLD HEADQUARTERS + ENTERPRISE SALES & SERVICES

20-20 Technologies Inc.
400 Armand-Frappier Blvd, Suite 2020
Laval, Quebec H7V 4B4 Canada
Phone: 514.332.4110
Fax: 514.334.6043
Sales Toll Free: 1.866.698.2020
Quebec Toll Free: 1.888.504.2020

20-20 Technologies Inc.
Commercial Corp.
1255 Crescent Green Drive, Suite 410
Cary, NC 27518
Phone: 919.319.0888
Fax: 919.319.0884
Sales Toll Free: 1.800.225.7804

E-mail: enter.sales@2020.net
www.2020Technologies.com

© 2010 by 20-20 Technologies Inc. All rights reserved. The names 20-20 Technologies, 20-20, 20-20 Design, 2020.net, 20-20 Virtual Systems, 20-20 Virtual Showroom, 20-20 Virtual Planner are registered, pending or common law trademark of 20-20 Technologies Inc. and/or any of its subsidiaries. All reference to other brands and products appearing herein are trademarks of their respective holder(s). 20-20 Technologies Inc. reserves the right to alter specifications and other product information without prior notice. The software and information contained herein are subject to the terms and conditions of the License Agreement included with the media.